

ELIZABETH BARDEN

ARTIST

CURRICULUM VITAE

I am an Australian contemporary figurative artist with an established studio practice. I confess to being 'a people watcher'. It has always been my fascination to paint people, as a figurative artist I hope that when I paint someone I can inject a feeling that goes beyond skill or technique to what lies within, aiming to find common human themes.

HONOURS & AWARDS

A highlight has been having my portrait of Christine Anu accepted into the permanent collection of the Australian National Portrait Gallery, Canberra.

Selected to have two artworks digitally recorded in a time capsule due to land on the Moon late 2021, as part of The Peregrine Project, Artists on the Moon. The art is being sent alongside NASA's scientific payloads on Astrobiotic's Peregrine Mission One, via a Vulcan Centaur rocket.

Selected as a finalist in the International Biennial Portrait Competition at the Wausau Museum of Contemporary Art, Wisconsin USA, 2021

Selected as a semi-finalist. Art Renewal Centre NYC 15th Salon, 2020

Selected as one of 70 prominent women artists from around the world to participate in an exhibition celebrating International Womens Day 2021, at the MEAM -Museum Europe d'Art Modern, Barcelona.

Selected - Inaugural Salon De Refuse for the Brisbane Portrait Prize, 2020

Finalist, Brisbane Portrait Prize 2020

Winner of the Florence and Ernest Thorne Thompson Award, Allied Artists of America 107th Annual International Exhibition, Salmagundi Club, 5th Ave, NYC, 2020

Finalist, The Lester Prize, Art Gallery of WA, 2020

Accepted by Jury Selection for the 107th Allied Artists of America Exhibition, Salmagundi Club, 5th Ave, NYC

Finalist Lethbridge 20,000 Art Prize, 2020

Finalist, Darling Portrait Prize, National Portrait Gallery of Australia, 2020

Semi-finalist, Darling Portrait Prize, National Portrait Gallery of Australia, 2019

Finalist, Brisbane Portrait Prize 2019

Finalist, Lester Prize 2019

Finalist, Kennedy Art Prize 2019

Winner, Art Shed Brisbane Award, Lethbridge 20,000 2019

Finalist, Portia Geach Memorial Art Award 2019

Finalist, SBS Portrait Prize 2019

Finalist, Contemporary Art Awards, Brisbane 2019

Finalist, Lethbridge 10,000, Brisbane 2018

Finalist, Rotary Art Show Brisbane 2017

Finalist, Portia Geach Memorial Art Award 2016

Finalist, Shirley Hannan National Portrait Prize, Bega 2005

Finalist, Portia Geach Memorial Art Award, Sydney 2004

Finalist, Shirley Hannan National Portrait Prize, Bega 2004

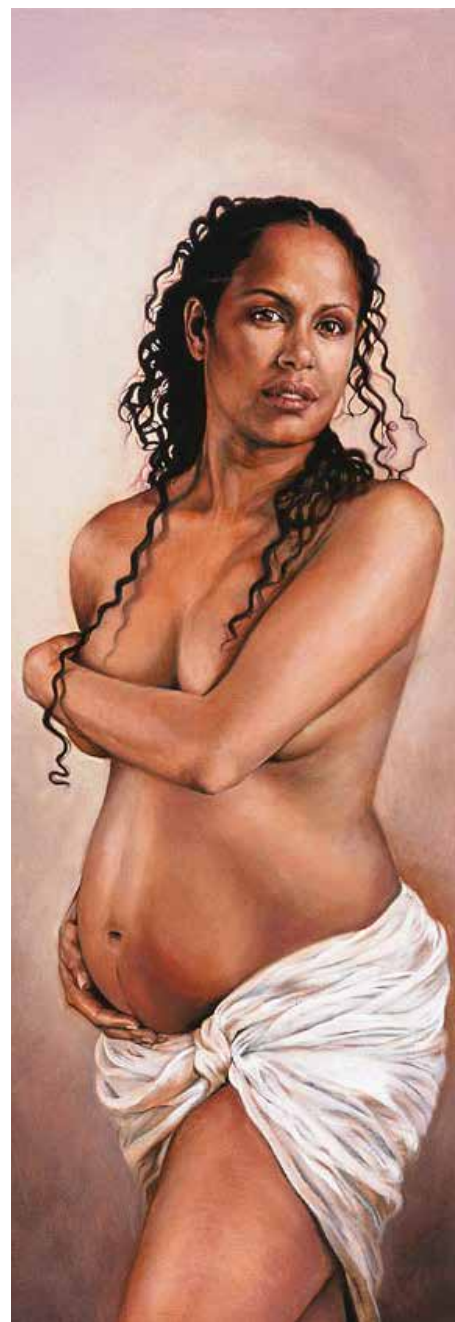
Winner, 'People's Choice Award, Shirley Hannan National Portrait Prize 2004

Finalist, Portia Geach Memorial Art Award, Sydney 2003

Finalist, Portia Geach Memorial Art Award, Sydney 2002

Finalist, Portia Geach Memorial Art Award, Sydney 2001

Best Graduating Art Student, QUT Dip.T 1985



ELIZABETH BARDEN

ARTIST

CURRICULUM VITAE

COLLECTIONS

'Kaleidoscope Queen' 2020, Ashley Longshore International Collection
'Angus Edmonds' 2005, University of Queensland, Emmanuel College
'Ron Ireland' 2004, held in Cairns City Library
'Rosella Namok' 2003, held in collection of Cairns Regional Art Gallery
'Christine Anu - Waiting For Zipporah' 2002, held in permanent
Collection of National Portrait Gallery, Canberra
'Sir Sydney Williams' 2000, held in the Cairns City Library

SOLO EXHIBITIONS

2003 'Seeing Secrets', Cairns Regional Gallery, Australia
1999 'A Shore Thing', Cairns Regional Gallery, Australia

GROUP EXHIBITIONS

2021	'Women Painting, All Over The World', European Museum of Modern art, Barcelona. 'Woman Painting Women' Burrinja Art Gallery, Victoria. 'Au Natural', a PoetsArtists exhibition, 33 Contemporary Gallery, Chicago. 'Music Man', a Poets Artists on-line exhibition	2017	Rotary Art Show, Brisbane
2020	'Storytellers', Flinders Lane Gallery, Melbourne 'Pub Rock' exhibition, a curated exhibition by the Australian National Portrait Gallery, Canberra	2016	Portia Geach Memorial, S.H.Ervin Gallery, Sydney
2019	Brisbane Portrait Prize, Powerhouse Museum, Brisbane SBS Portrait Prize, Mornington Peninsula Lethbridge 20,000, Brisbane Lester Prize, Art Gallery of WA, Perth 'Difficult Subjects' a juried Poets and Artists show, published on-line and in 'Goss' Magazine 'Provocative Patterns' a juried Poets and Artists exclusive issue of 'Goss' Magazine 'Adorn Me', a juried show of International artists, a Poets and Artists Publication and on-line exclusive at Artsy through the Zhou B Art Centre, Chicago	2015	'Bare-Degrees of undress' a curated and touring exhibition by the National portrait Gallery of Australia
2018	'28 th Annual Holiday Miniatures Show', Abend Gallery, Denver, Colorado '8x8 Self-portraits', Zhou B Art Centre, Chicago USA Portrait Artist Australia Members Exhibitions	2012	The Blunt, Cairns
		2008	'From the Collection' Cairns Regional Gallery
		2007	'From The collection' Cairns Regional Gallery
		2006	'Hidden Treasures' Cairns Regional Gallery 'Idols and Icons', Art House Hotel, Sydney
		2005	Cairns Regional Gallery Postcard Show Shirley Hannan, Bega Valley Regional Art Gallery
		2004	Portia Geach Memorial S.H.Ervin Gallery, Sydney 'Courtroom and Street', Art House Hotel, Sydney Cairns Regional Gallery Postcard Show Shirley Hannan, Bega Valley Regional Art Gallery Annual show, Kickarts, Cairns
		2003	Portia Geach Memorial, S.H.Ervin Gallery, Sydney Cairns Regional Gallery Postcard Show 'Artist By An Artist', Art House Hotel, Sydney
		2002	Portia Geach Memorial, S.H.Ervin Gallery, Sydney Cairns Regional Gallery Postcard Show
		2001	Portia Geach, S.H.Ervin Gallery, Sydney

ELIZABETH BARDEN

ARTIST

CURRICULUM VITAE

PUBLICATIONS

Elizabeth Barden Featured Artist , CREAR Art and Culture Platform, Portugal.
'Seeking Daisy' and 'LOVE' selected for Retro Portraits, Hashtag Magazine, 2021
'Women Painting Women. All Over The World', MEAM Catalogue
Elizabeth Barden - Curator of 'Florals' iARTistas Magazine 2021
'Family Man' selected for 'Music Man' iARTistas Magazine 2021
'Hold Tight' selected for 'Au Natural' iARTistas Magazine 2021
'Australian Artist 'over the Moon' as works chosen for space collection, ABC News on-line, across Australia, re-posted on many other on-line sites, 2021
Elizabeth Barden- Curator of 'The Ties That Bind', Goss Magazine, a PoetsArtists Publication, 2020
Featured Artist ArtMoire International Publication 2020
Featured Artist, Realism Today International Magazine 2020
Featured Artist, ArtZine Australia, 2020
Featured Artist Create International Art Magazine, Miami Art Basel Issue, 2019
'Jaya-ism' selected for the Variety Issue of the International publication Poets and Artists Magazine 2019
'Gamechanger' selected for the Variety Issue of the International publication Poets and Artists Magazine 2019
'Because of Her We Can', Naidoc themed virtual excursions of the National Portrait Gallery, Canberra
'The Artists Book', Portrait Artists Australia - Ten Years, 2012
'Portrait' NPG publication, 2009-2011
'The Collection', Cairns Regional Gallery Acquisitions from 2006 to 2008
'National Capitol School Excursion Planner - Artistic Expressions, National Portrait Gallery', 2005
'Portrait.13', National Portrait Gallery, Spring 2004
'Who Do You Think You Are?' SBS documentary featuring Christine Anu and artwork by Elizabeth Barden



ELIZABETHBARDEN.COM